

## GROUNDING-FE/CCS

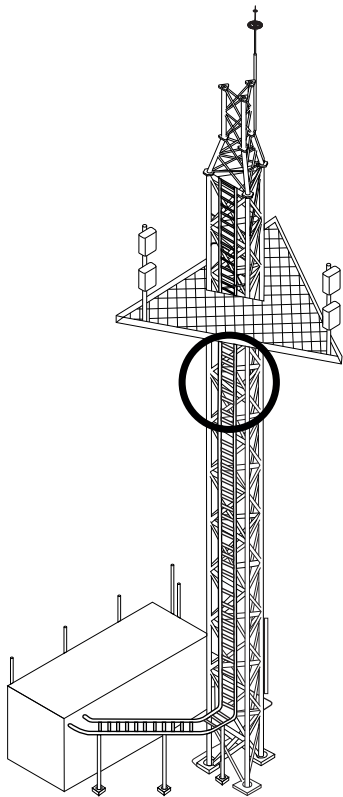
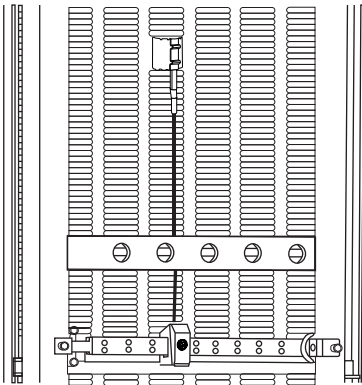
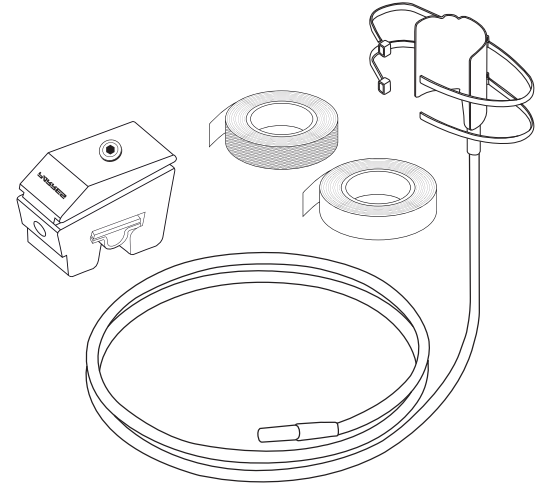
The FE Grounding Kit is designed in It is entirely made of galvanized steel, making it unattractive to theft.

Grounding can be used on 1/2" waveguides (FEEDERS). up to 2".

To give ground reference to the guides waveform of a base radio.

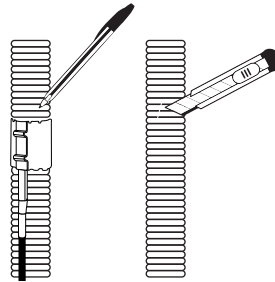
### Components

Grounding
2 plastic ties 5 mm. x 8"
1 jumper with 80 cm of PARRES steel cable
3/16 gauge galvanized with 6 gauge bushing
1 Self-vulcanizing tape of 2" x 1.5 m.
1 Insulating tape
1 CCS-H Simple Connection Chamber

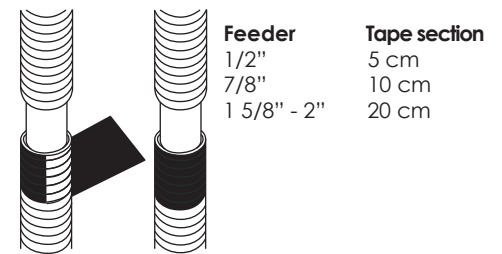


### Installation guide

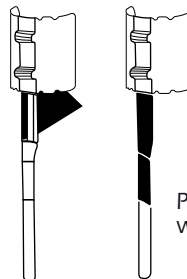
- 1** Mark, cut and remove 2" of the feeder insulation to be landed, taking care not to damage the internal coating.



- 2** Depending on the thickness of the feeder, place a section of self-vulcanizing tape on the bottom.

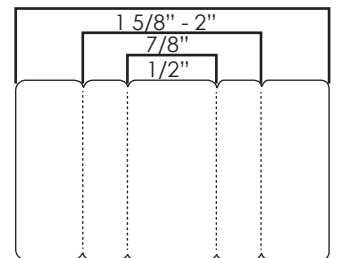


- 3** With 5 cm. of self-vulcanizing tape cover the base of the grounding.

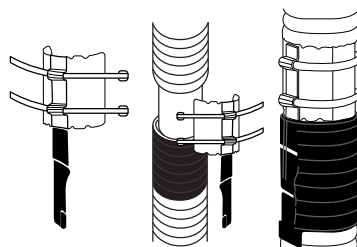


Place the tape without stretching it.

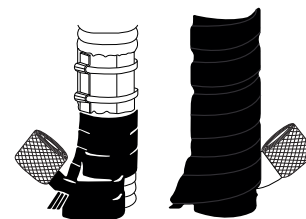
- 4** Cut the Grounding sheet according to the diameter of the feeder.



- 5** Place the grounding on the exposed metal coating of the feeder and secure by tightening the straps, cutting off the excess.



- 6** Cover the grounding with self-vulcanizing tape, starting 3" below the grounding, up to 3" above it. Repeat until you finish the entire tape, trying to have 1/2" of overlap between wraps.



- 7** Cover the self-vulcanizing tape with insulating tape without leaving gaps where it can be filter water.

